

Pethouse for Sale to Roma : Parioli



120 square meters | : 1 | : 3 | : 5

Parioli, splendid penthouse and penthouse with terrace.

In the Parioli area, in an elegant recently renovated building, a splendid penthouse and super-attic. The 120 sq m property consists of an entrance hall, large living room with dining area, kitchen, hallway, a bathroom, a double bedroom and a single bedroom. All the rooms have direct access to the two 31 sqm balconies that serve all the main rooms on the first level. An internal staircase leads to a room on the upper floor with a beautiful panoramic terrace of 75 square meters. The apartment enjoys a particular brightness, ideal for those who prefer to live in an elegant and reserved context but at the same time served by the numerous socio-cultural attractions of the area. The building in excellent maintenance conditions, located in a strategic position not far from the private university Luiss, a few steps from one of the largest parks in the capital Villa Ada and adjacent to one of the most important sports centers in Rome, is a valid solution. to the chaos of the city, making use of the proximity of the important road infrastructures that allow a quick connection both towards the center and towards the motorway junctions.

Property details

---> **Codice** <---: Pezzana

---> **Motivazione** <---: Sale

---> **Tipologia** <---: Pethouse

Region: Lazio

---> **Provincia** <---: Roma

---> **Comune** <---: Roma

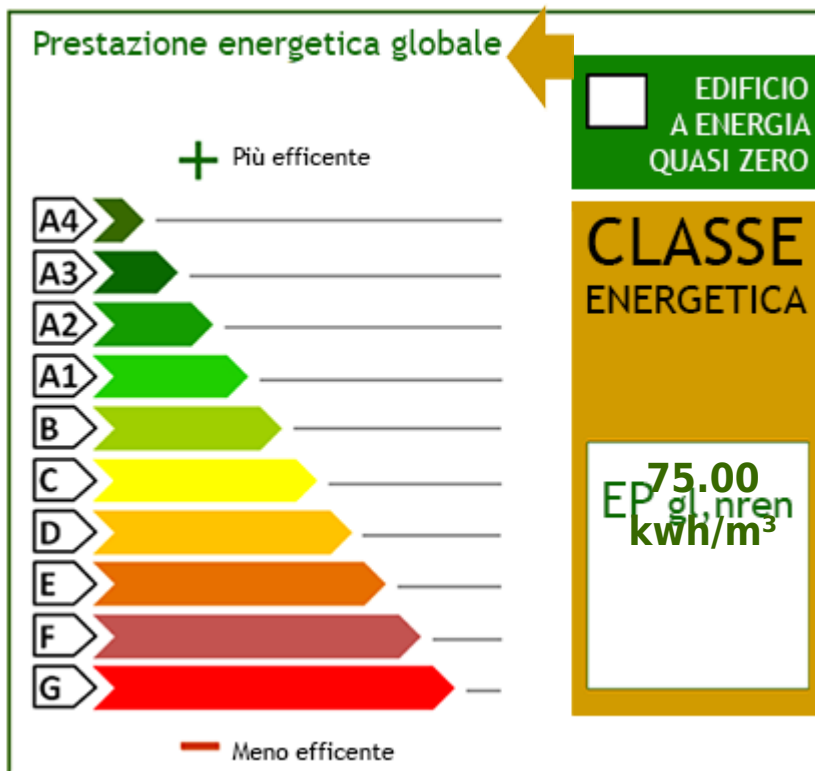
---> frazione <---: Parioli	---> Prezzo_Richiesto <---: € 810.000
---> Totale_mq <---: 120 square meters	---> camere <---: 3
---> bagni <---: 1	---> Locali <---: 5
: 2020	: € 110
: Yes	

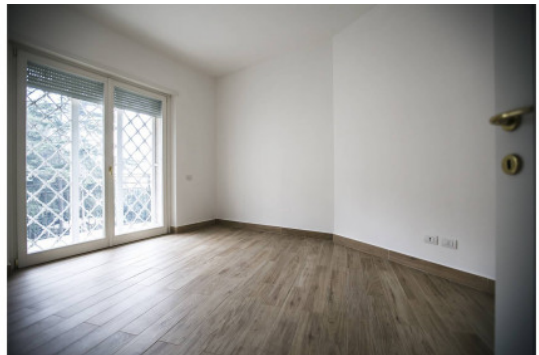
Features

Terrace: 75 m ²	Tv Antenna: Condominium	Parquet
Telephone System	Wiring: Up to standart	Shower

Nearby

Gyms	Spa	Football Fields	Fitness Centers
Tennis Courts	Bike Lanes	Playgrounds	Railway Station
Public Transport	Kindergarten	Elementary Schools	Schools
High Schools	Cafe	Post Offices	Shopping Centers
Municipal Offices			







TIPLOGIA: ATTICO
PIANO: 3°- 4°
MQ: 82 + 31 BALCONE + 75 TERRAZZO + 20 SOFFITTA